

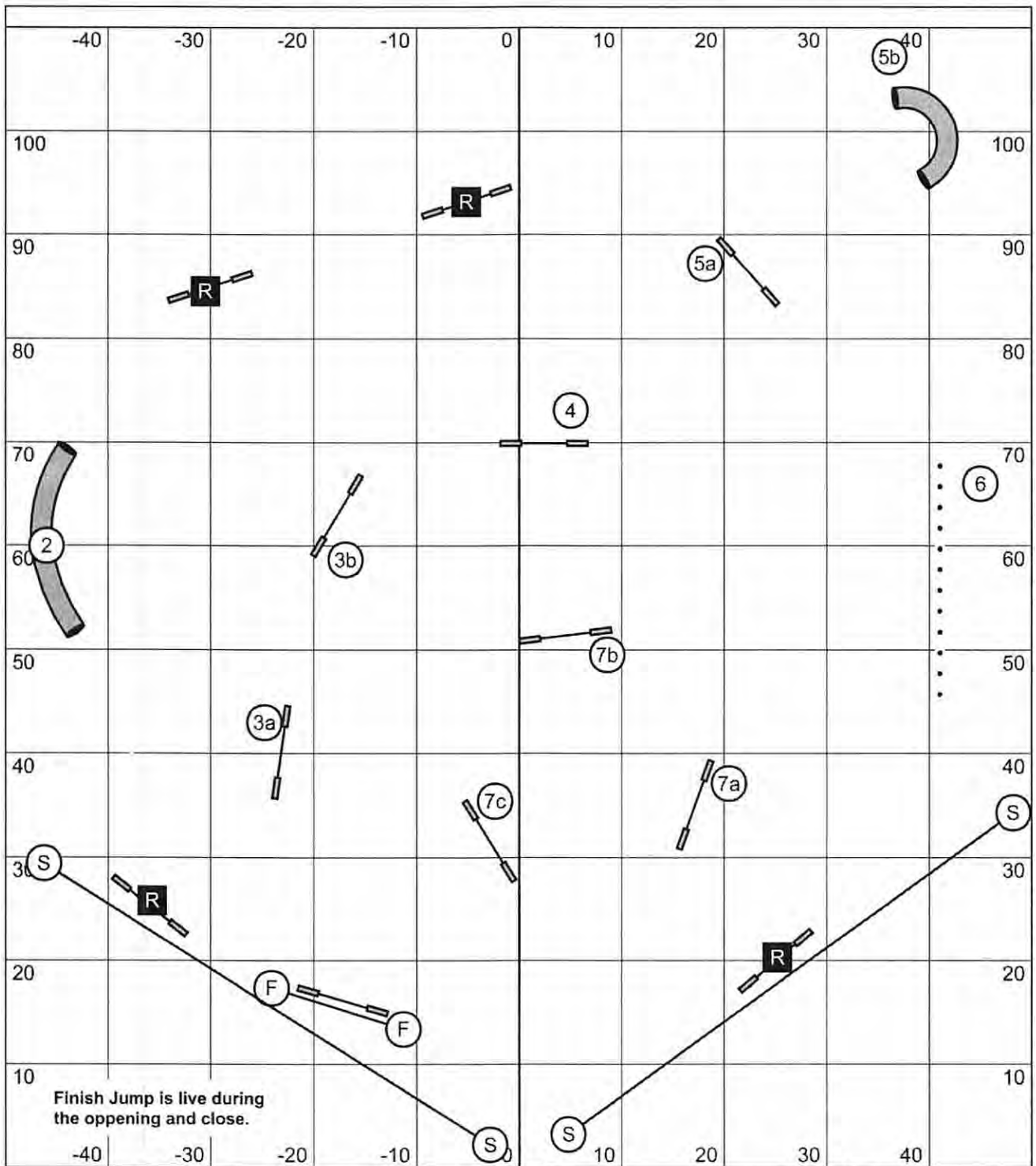
Exit

T/S

Enter

Next dog in line - please enter when dog on course goes into tunnel #15

Two Rivers Agility Club of Sacramento (TRACS)  
**Masters / PIII / V Jumpers**  
 Saturday, September 15, 2018  
 Judge: Kenneth Boyd



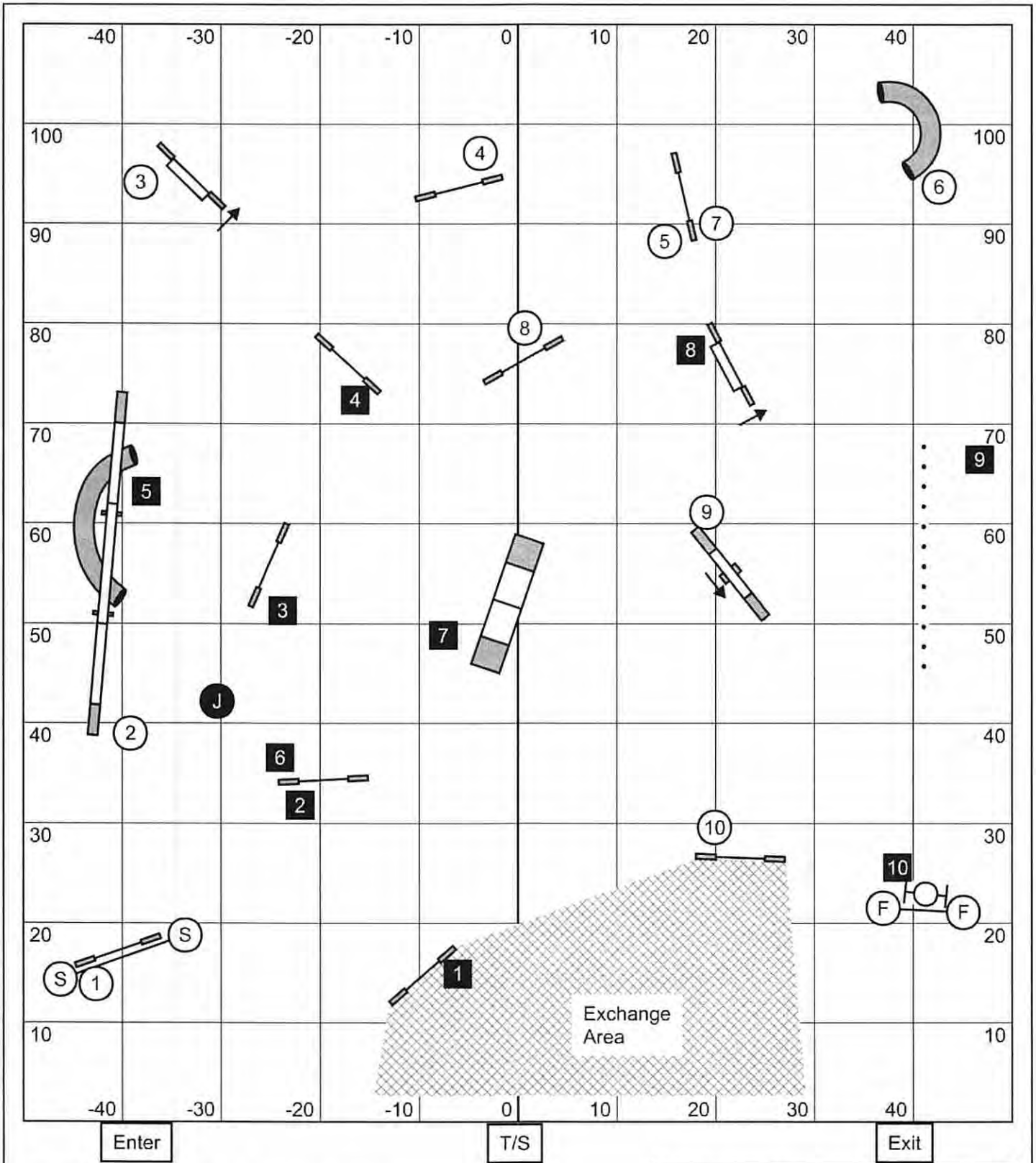
Exit

T/S

Enter

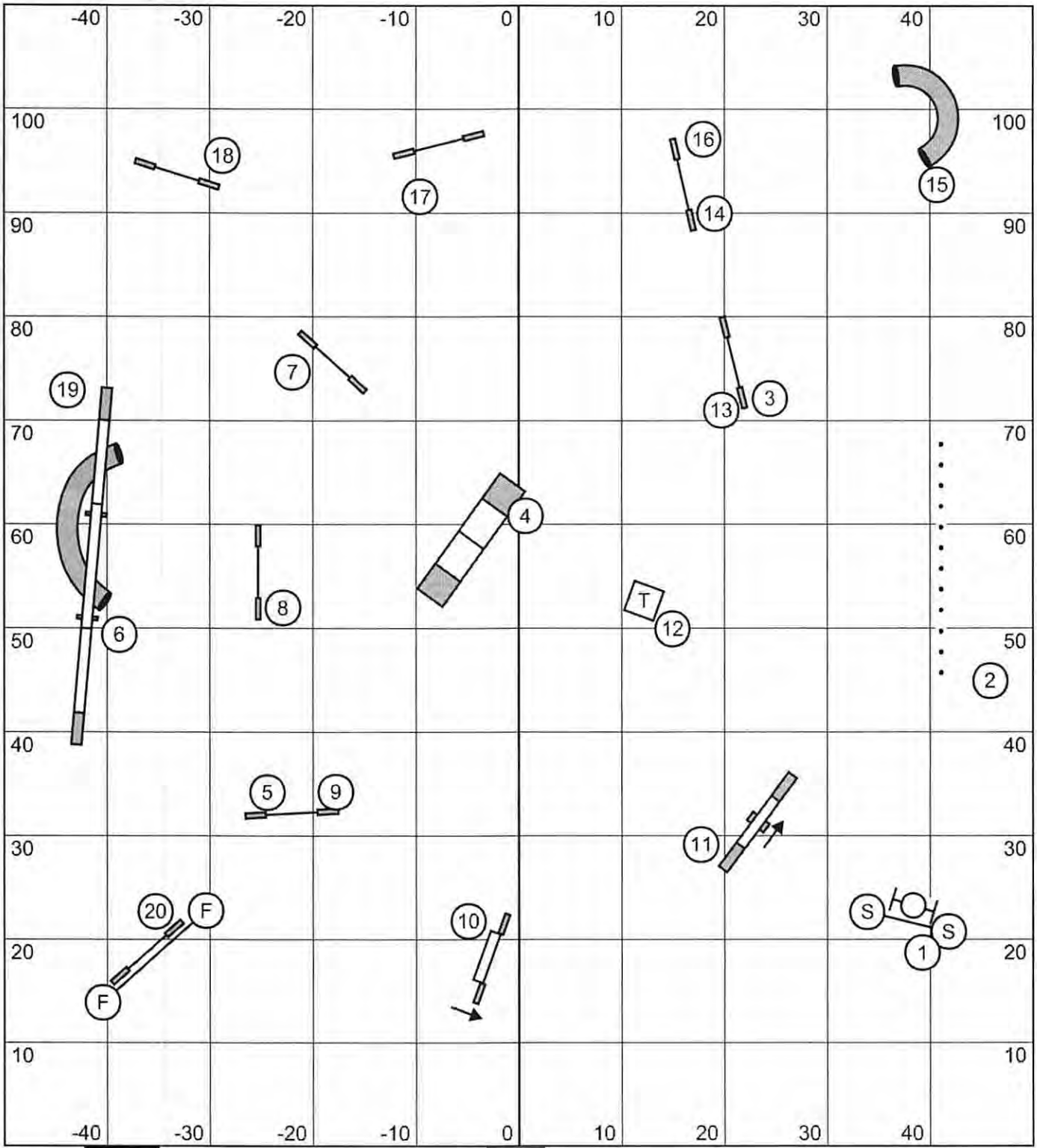
**Standard Configuration - 3 or 4 Reds**  
 - In the opening all obstacles are bi-directional and the #3, #5 and #7 combos can be taken in any order and direction.  
 - Combo must be completed to go on. Off-course in a combo will result in a whistle.  
 - In the closing #2 obstacle is bi-directional. All other obstacles and combos must be taken in direction as marked.  
 - Course Time is 47s for Lg (20"/22"/24"), 49s for Med (14"/16"), and 51s for Sm (10").  
 2 seconds is added for PIII Dogs: 49s (20"16"14"), 51s (12"), 53s (8").  
 4 seconds is added for Veteran Dogs: 51s (16"12"), 53s (8"), 55s (4").

Two Rivers Agility Club of Sacramento  
 (TRACS)  
**Masters / PIII / V Snooker**  
 Saturday, September 15, 2018  
 Judge: Kenneth Boyd



1st dog - obstacles 1 - 10 (light circles),  
 2nd dog - obstacles 1-10 (dark squares)  
 mixed jump heights - tell gate steward which side you are running.  
 Dogs can be on leash or held in the exchange area. Both dogs and  
 both handlers must be in exchange area during the exchange

Two Rivers Agility Club of Sacramento  
 (TRACS)  
**Masters / PIII / V Pairs**  
 Saturday, September 15, 2018  
 Judge: Kenneth Boyd



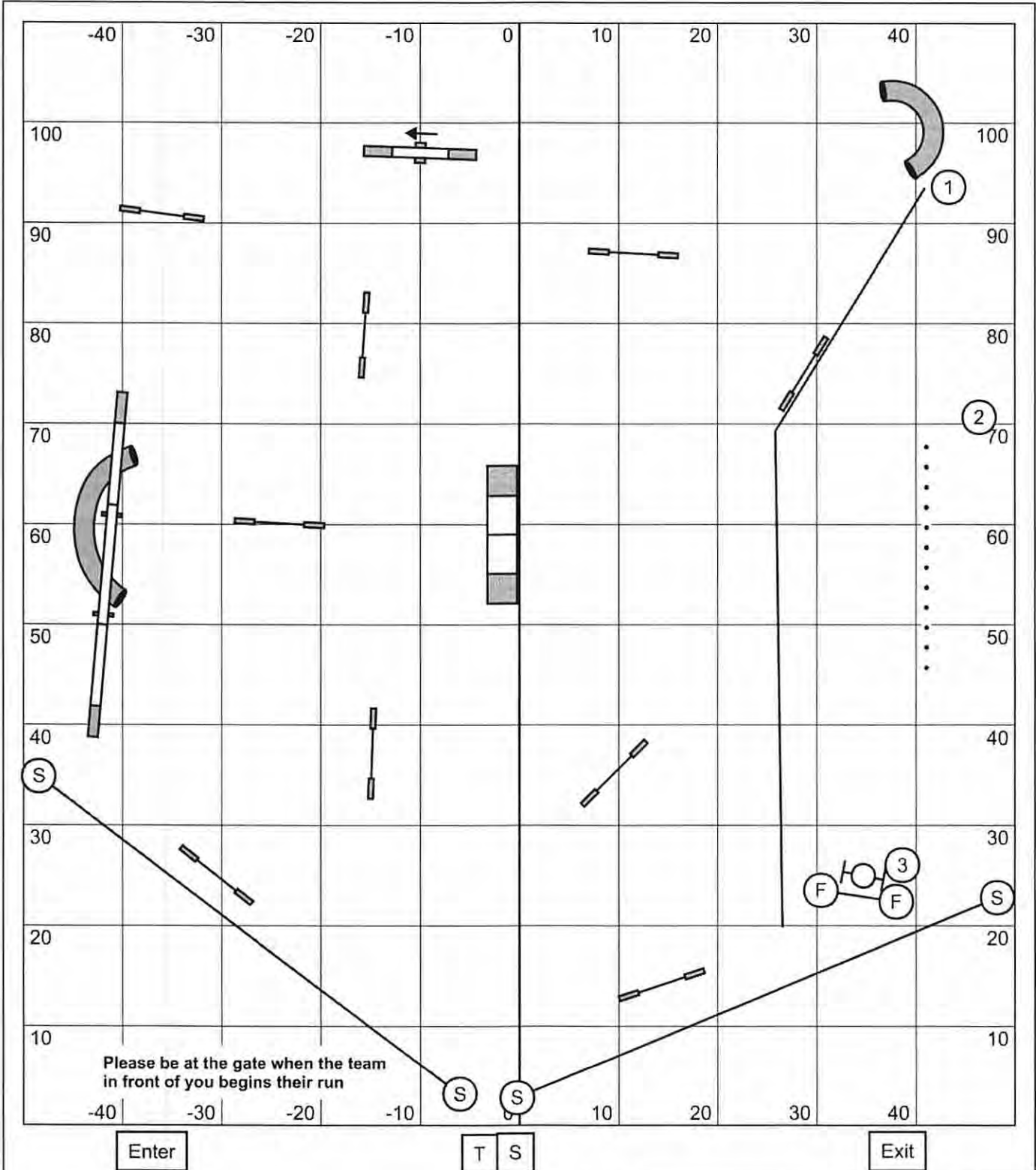
Enter

T/S

Exit

Next dog in line - please enter when dog on course exits tunnel #15

Two Rivers Agility Club of Sacramento (TRACS)  
**Masters / PIII / V Standard**  
 Saturday, September 15, 2018  
 Judge: Kenneth Boyd



1-2-3-5 Point System - Directional Control and Weave Pole Performance Gamble  
 Seesaw = 5 points, no contact-to-contact, back-to-back same obstacle ok  
 25 Sec Opening,  
 Gamble Time: 16s large (20"/22"/24"), 17s medium (14"/16"), 19s Small (10")  
 (add 1s for PIII dogs: 17s (14"/16"/20"), 18s (12"), 20s (8"))  
 add 3s for Veteran dogs 19s (12"/16"), 20s (8"), 22s (4"))  
 At least 13 Points+Gamble = Q (Veterans: at least 11 Points+Gamble = Q)  
 In opening - any two gamble obstacles taken in sequence in the opening will result  
 in a gamble disqualification. Back-to-back gamble obstacle is ok. In gamble period  
 - gamble doesn't start until dog approaches the 1st obstacle.

Two Rivers Agility Club of Sacramento  
 (TRACS)  
**Masters / PIII / V Gamblers**  
 Saturday, September 15, 2018  
 Judge: Kenneth Boyd