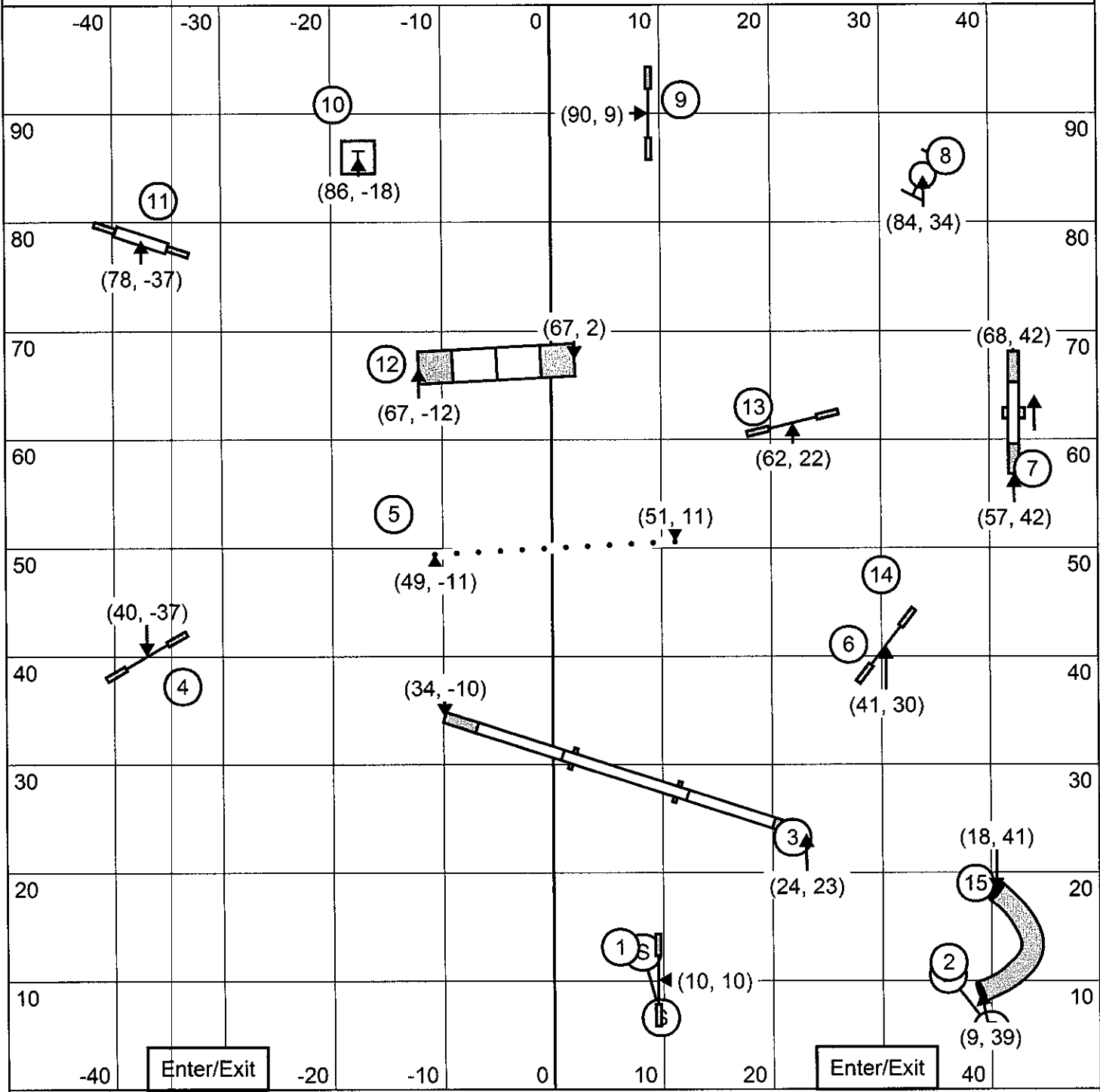


Starters/PI Standard

TRACS
 September 18, 2016
 Woodland, CA
 © Barbara Standiford



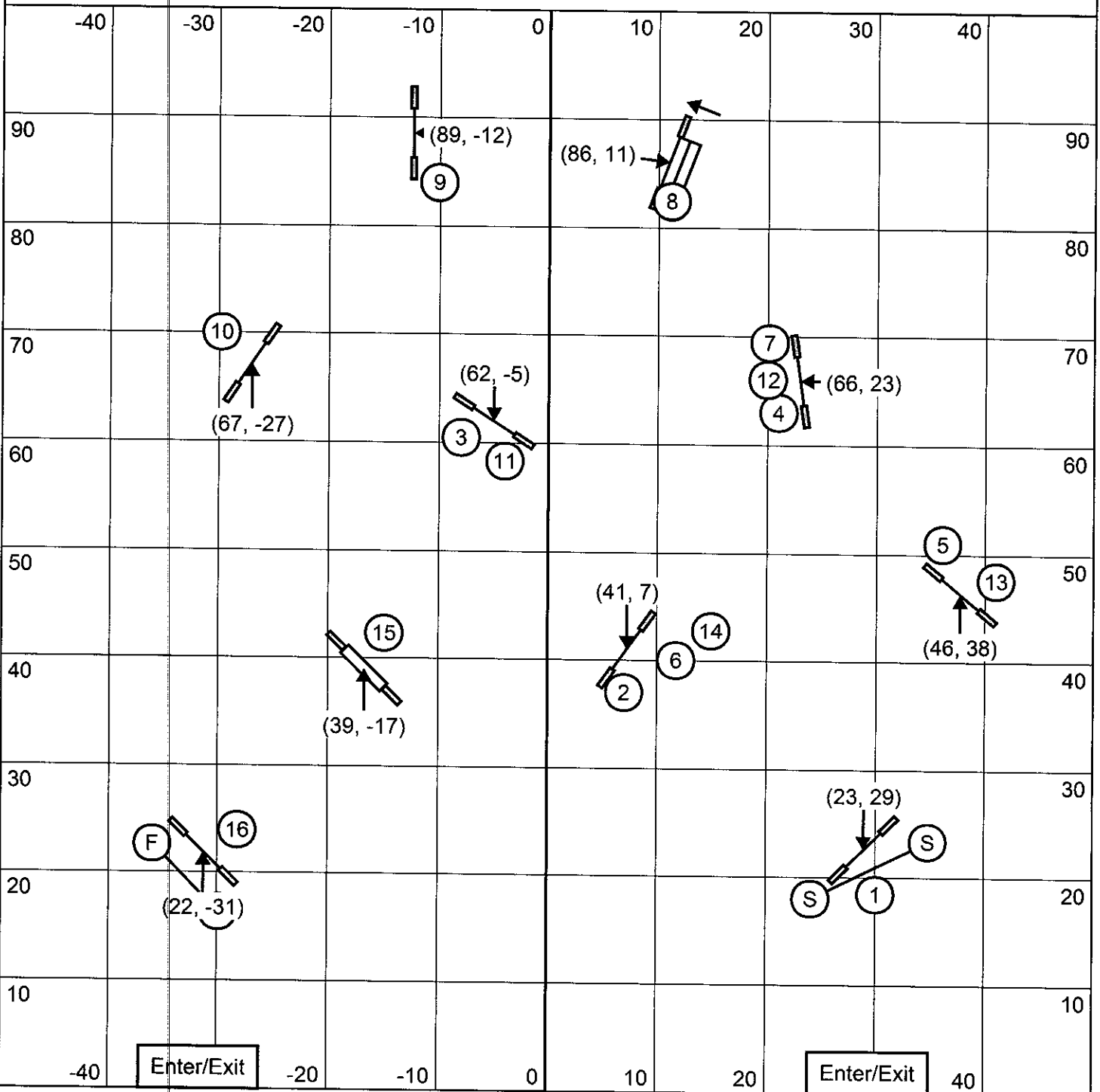
Enter/Exit

Enter/Exit

Come in when previous dog is at 12

Starters/PI Jumpers

TRACS
September 18, 2016
Woodland, CA
© Barbara Standiford

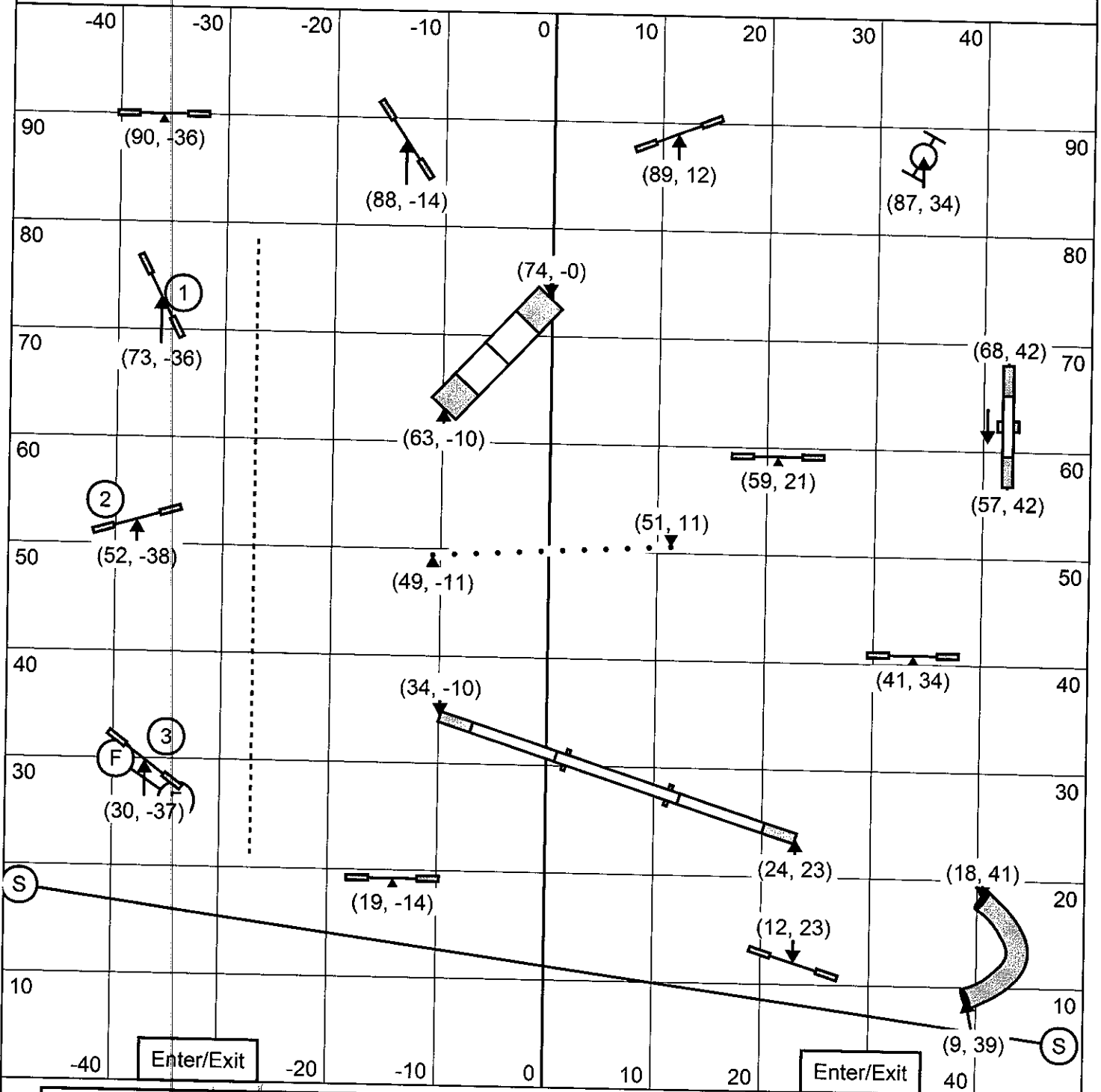


3 reds must be attempted
Everything is bi-directional in opening
#7 may be taken in any order/flow
In close, #2 is bi-directional, 3-7 is as numbered

CH 26-22: 50 s P 20-16 51 s
Ch 18-16 51s P 12: 52 s
Ch 14-12: 52 s P 8: 53 s

Starters/PI Gamblers

TRACS
September 18, 2016
Woodland, CA
© Barbara Standiford



1-2-3-5 System: ~~nothing~~ ^{Feeder} is worth 5
Back to back DW OK
Back to back AF/Teeter NOT OK
Joker is worth 30 points
Must get 15 points and joker to qualify

Opening: 30 seconds
Close:
Ch 26-22: 15 s P 20-16 16 s
Ch 18-16: 16 s P 12: 17 s
Ch 14-12: 17 s P8 18 s